

Solar roofing power system

---Grid connection



- Photovoltaic energy system Designed for residential use
- Green building materials Help buildings energy saving and carbon reduction
- Innovative integrated solar roofing system
- Mobile app system implementation monitoring More reliability
- Wider application Ultra-low starting voltage Ultra-wide voltage range
- Easy installation Product compact and light in weight Easier to install

		Type	Name	GS-3.24K	GS 5.4K	GS 8.37K	GS10.8K	GS12.69K	GS16.2K	GS17.64K	GS21.6K	GS 31.5K	GS 42.3K
1	Major equipment	Solar roof	Type of solar tile	JS90DG-13e 1/2									
			Solar tile quantity/ piece	36 (18*2)	60 (30*2)	93 (31*3)	120 (24*5)	141 (47*3)	180 (36*5)	196 (49*4)	240 (40*6)	350 (50*7)	470 (47*10)
	Electrical equipment	Inverter	G6-GR1P3K	G6-GR1P5K	GCI-1P8K-5G	G5-GR1P10K	GCI-3P12K-5G-PLUS	GCI-3P15K-5G-PLUS	GCI-3P17K-5G-PLUS	GCI-3P20K-5G-PLUS	GCI-30K-5G	GCI-40K-5G	
		AC and cage	Single phase, 3kw/1 sink 1, 1 set	Single phase, 5kw/1 sink 1, 1 set	Single phase, 8kw/1 sink 1, 1 set	Single phase, 10kw/1 sink 1, 1 set	Single phase, 12kw/1 sink 1, 1 set	Single phase, 15kw/1 sink 1, 1 set	Single phase, 17kw/1 sink 1, 1 set	Single phase, 20kw/1 sink 1, 1 set	Single phase, 30kw/1 sink 1, 1 set	Single phase, 40kw/1 sink 1, 1 set	
2	Solar roofing data	Power generation forecast	Total power/W	3240	5400	8370	10800	12690	16200	17640	21600	31500	42300
			Annual power generation kWh	3879	6465	10021	12930	15192	19395	21119	25860	37712	50642
		Installation area selection	Roof net area /m ²	19	31	48	62	73	93	102	124	181	285
3	Optional	Configuration quantity	Solar tile quantity/ piece	36-42	60-66	93-99	120-140	141-165	180-200	196-228	240-270	350-385	470-520

Notice:

1. Annual power generation/kWh is calculated based on the annual average sunshine XXh/Y in Munich, Germany.

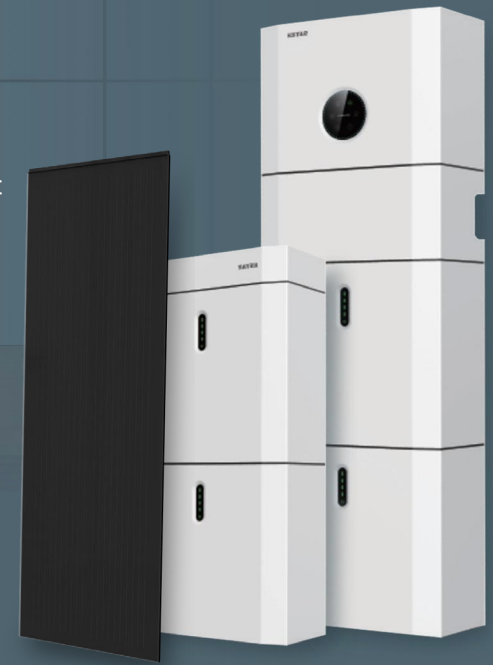
2. Design based on Solar Tile Aesthetic JS90DG-13e 1/2.

Solar roofing power system

---On-grid energy storage



- Innovative solar roofing system, Integrated with the building
- High Efficiency Storage System, Efficiency up to 97% or more
- Installation Convenience, Wall-mounted outdoor installation
- Flexible expansion, Improve system integration flexibility
- Safe and reliable , Integrated battery charge and discharge management
- Remote monitoring, Real-time online operation status



		Type	Name	GS-H-3.24K-5.1	GS-H-5.4K-5.1	GS-H-6.3K-10.4	GS-H-8.28K-10.4	GS-H-10.8K-10.2
1	Major equipment	Solar roof	Type of solar tile	JS90DG-13e 1/2				
			Solar tile quantity/ piece	36 (18*2)	60 (30*2)	70 (35*2)	92 (46*2)	120 (40*3)
		Electrical equipment	On-grid inverter	BluE-S 3680D	BluE-S 5000D	AIO-H3-6.0	AIO-H3-8.0	BluE-S 10KT
			AC and cage	Single phase, 3kw/1 sink 1, 1 set	Single phase, 5kw/1 sink 1, 1 set	Three-phase, 6kw/1 sink 1, 1 set	Three-phase, 8kw/1 sink 1, 1 set	Three-phase, 6kw/1 sink 1, 1 set
Storage battery	Lithium Batteries (One-stop)	BIUE PACK5.1 , 1Pack		Lithium battery 10.4kWh		BLUE PACK5.1 2 groups, (4,6,8 optional)		
2	Solar roofing data	Power forecast	Power/W	3240	5400	6300	8280	10800
			Annual power generation k/Wh	3784	6307	7358	9671	12614
		Installation area selection	Roof net area/m ²	19	31	37	48	62
3	Options	Additional pay	Roof tile quantity/ piece	36-42	60-66	70-82	92-100	120-135

Zhejiang San-gobuild Jiasheng New Energy Co., Ltd

E-mail: info@sgbsolar.com

Hotline: +86-4000 788 771

Address: No. 512, Chongxian Road, Gaole Industrial Park, Gaohong Town, Lin'an District, Hangzhou, Zhejiang Province, China

Web address: www.sgbsolar.com



Due to continuous innovation, research and product improvement, the specifications in this product information sheet are subject to change without prior notice. The specifications may deviate slightly and are not guaranteed. The data do not refer to a single module and they are not part of the offer, they only serve for comparison to different module types.

Notice:

1. Annual power generation/kWh is calculated based on the annual average sunshine XXh/Y in Munich, Germany.

2. Design based on Solar Tile Aesthetic JS90DG-13e 1/2.